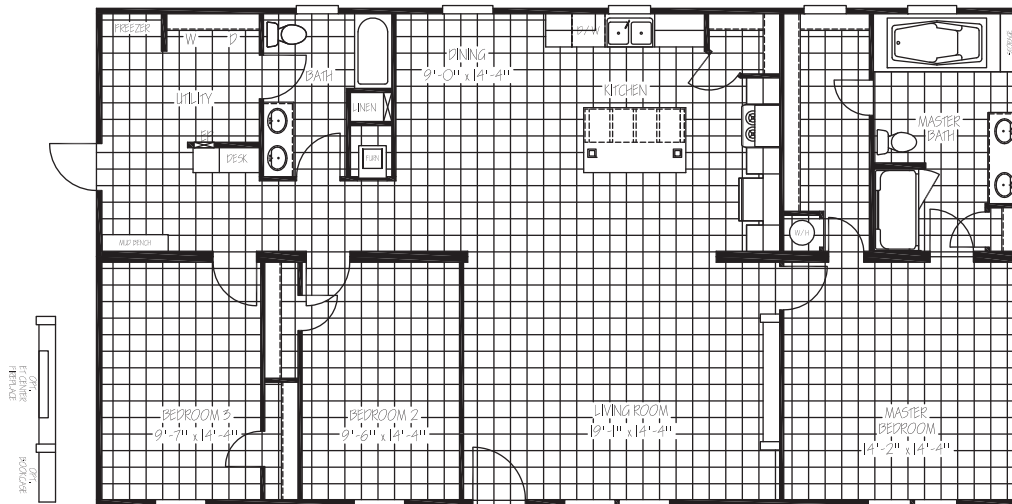


# THE ROOSEVELT

THE  
**ELITE**  
SERIES

MODEL: **ELT32563A** | 32 X 56 | 1,680 SQ. FT. | 3 BED 2 BATH



## EXTERIOR

- Low E Thermal Pane Windows with Argon Gas
- Craftsman Style Front Door with Full View Storm
- Cottage Rear Door
- Vinyl Siding / Comp Roof
- 5" Lineal Trim FDS/ Hitch
- 16" on Center 2x8 Floor Joist
- Vinyl Siding w/OSB Wrap and Vapor Barrier
- Smart Panel Insert w/ Columns & Eyebrow

## INSULATION

- R-38 Blown Fiberglass Roof (*Formaldehyde Free*)
- R-13 Fiberglass Insulation in Walls (*Kraft Back*)
- R-22 Fiberglass Insulation in Floors
- Thermal Zone II / ENERGY STAR

## KITCHEN

- 42" Overhead Cabinet System
- 3/4" Hardwood Cabinet Doors
- Lined Overhead Cabinets
- Lined Center Shelf in Base Cabinets
- Stainless Steel Farmhouse Sink
- Spring Loaded Faucet with Sprayer
- Pendant Lights Over Island
- Tile Backsplash

## APPLIANCES

- Stainless Steel SXS Refrigerator with Water & Ice
- Stainless Steel Smooth Top Range
- Stainless Steel Dishwasher
- Box Range Vent Hood
- 30 Gal. Dual Element High Efficiency Water Heater

## INTERIOR

- Programmable Thermostat
- Textured Ceilings
- Entertainment Center
- 8 Foot Flat Celings
- Upgrade Lino Throughout
- Brushed Nickel Lever Handles Interior Doors
- 52" Brushed Nickel Ceiling Fan in Living Room
- Wire and Brace for Ceiling Fan Master Bedroom
- Brushed Nickel Glass Light Fixtures in all Bedrooms
- LED Flush Mounted Ceiling Lights
- 2" Blinds Throughout
- Overhead Air

## BATHS

- 72" Deck Tub with Cab Door Access to Plumbing
- 60" FG shower w/ Door in Master
- Oval China Sinks Both Baths
- 54" Fiberglass Tub/Shower in Guest Bath
- Brushed Nickel Metal Faucets w/Lever Handles
- Elongated Toilets
- Tile Backsplash/Mirror Trim Master Bath

## UTILITY

- Total Electric with 200 Amp Service
- Exterior Outlet Front Door Side
- Water Shut Offs at Toilets Only
- Master Water Shut-Off Valve in Utility
- Utility Door

## POPULAR OPTIONS

- Carbon Grey Trim Package
- Ceiling Beams
- 50 Gallon Water Heater
- Additional Ceiling Fan (MBR)
- 100 Amp Electrical Panel Box
- Wind Zone 2
- Gas Furnace/ Gas Range
- AC Disconnect
- Microwave over Range
- Bookcase by Entertainment Center
- Entertainment Center with Electric Fireplace
- Smart Panel with Trim Around All Windows

