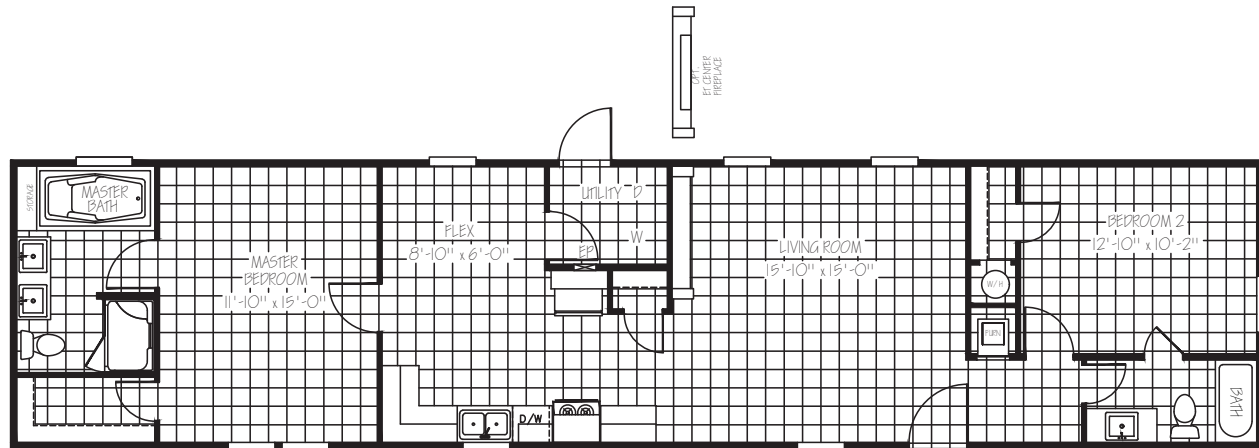


THE NIXON

★ ★ ★ THE
SPECIAL
SERIES

MODEL: SPS16682A | 16 X 68 | 1,065 SQ. FT. | 2 BED 2 BATH



UTILITY

- Total Electric with 200 Amp Service
- Exterior Outlet Front Door Side
- Water Shut Offs at Toilets Only
- Master Water Shut-Off Valve in Utility
- Utility Door

INSULATION

- R-21 Blown Fiberglass Roof (*Formaldehyde Free*)
- R-11 Fiberglass Insulation in Walls (*Kraft Back*)
- R-11 Fiberglass Insulation in Floors
- Thermal Zone II

EXTERIOR

- Low E Thermal Pane Windows
- Steel Front Door with Full View Storm
- Cottage Rear Door
- Vinyl Siding / Comp Roof
- Whole House Wrap/ Vapor Barrier
- 5" Lineal Trim
- 16" on Center 2x8 Floor Joist

BATHS

- 72" Deck Tub W/Cab Door Access to Plumbing
- 48" Fiberglass Shower with Glass Doors
- Ceramic Lavs in Master/Guest Bath
- LED Flush Mounted Ceiling Lights over Shower, Tub, Lav
- 54" Fiberglass Tub/Shower in Guest Bath
- Brushed Nickel Metal Faucets w/Lever Handles
- Elongated Toilets
- Master Bath Mirror Trim

KITCHEN

- 42" Overhead Cabinet System
- 3/4" Hardwood Cabinet Doors
- Lined Overhead Cabinets
- Lined Center Shelf in Base Cabinets
- Brushed Nickel Lever Handles Interior Doors
- White Farmhouse Kitchen Sink
- Spring Loaded Faucet
- LED Flush Mounted Ceiling Lights
- Color Matching Box Vent Hood

INTERIOR

- 8 Foot Flat Ceilings
- Upgrade Lino Throughout
- 52" Brushed Nickel Ceiling Fan in Living Room
- Wire and Brace for Ceiling Fan Master Bedroom
- Brushed Nickel Glass Light Fixtures in all Bedrooms
- LED Flushed Mounted Ceiling Lights
- 2" Blinds Throughout Except Master Bath
- Living Room Entertainment Center

APPLIANCES

- Stainless Steel 22 Cubic Foot Side by Side w/ Water & Ice Refrigerator
- Plumbed for Icemaker
- Stainless Steel Smooth Top Range
- Stainless Steel Dishwasher
- 30 Gal. Dual Element High Efficiency Water Heater

POPULAR OPTIONS

- 50 Gallon Water Heater
- Upgrade Insulation
- 100 AMP Electric Panel Box
- Electric Fireplace
- Gas Furnace
- Gas Range
- Wind Zone 2
- Overhead Air
- Tile Backsplash
- Bedrock Package
- Stainless Steel Kitchen Sink
- Smart Panel with Trim Around All Windows

