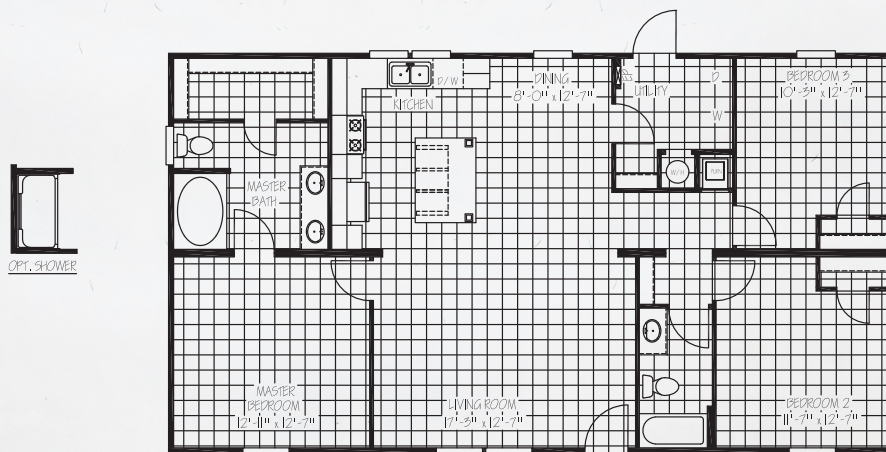


# NASSAU

MODEL: **FAC28483A** | **28X48** | **1264 SQ. FT.** | **3 BED 2 BATH**



## STANDARD FEATURES

### EXTERIOR

- Low E Thermal Pane Windows with Argon Gas
- Vinyl Siding W/ OSB Wrap and Vapor Barrier
- 38" Sunburst Front Door with Full View Storm
- 2x6 Floor Joist 16" on Center
- Shutters Front Door Side

### INSULATION

- R-21-11-11 Fiberglass Insulation

### INTERIOR

- Upgraded Lino Throughout
- Ceiling Fan Living Room
- 2" Mini Blinds Throughout

### KITCHEN

- 3/4" Hardwood Cabinet Doors

### APPLIANCES

- Black Refrigerator
- Black Range
- Black Dishwasher

### BATHS

- 60" Fiberglass Garden Tub/Shower Combo in Master Bath
- 54" Fiberglass Tub Guest Bath Tub/ Shower
- China Sinks in Both Baths
- Double Sinks Master Bath
- Elongated Toilets

### UTILITY

- Master Water Shut Off Valve

## OPTIONS AVAILABLE

- Dormer
- Upgraded Insulation R-38-13-22
- Smart Panel Siding
- Entertainment Center
- Entertainment Center with Electric Fireplace and Wood Shiplap
- A/C Disconnect
- Gas Furnace/Gas Range
- 100 Amp Service
- Wind Zone 2
- Stainless Steel Appliances
- Plumbed for Ice Maker (SS Appliances Only)
- Ceiling Fan in Master Bedroom
- 60" Fiberglass Shower with Glass Door in Master Bath
- Overhead Air
- 50 Gallon Water Heater