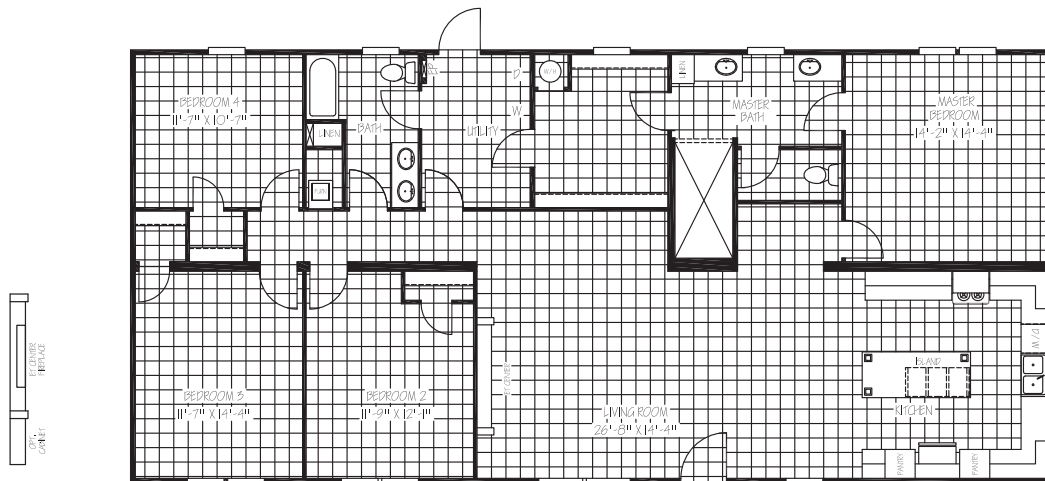


# THE MADISON

THE  
**ELITE**  
SERIES

MODEL: **ELT32644B** | 32 X 64 | 1,920 SQ. FT. | 4 BED 2 BATH



## EXTERIOR

- Low E Thermal Pane Windows with Argon Gas
- Craftsman Style Front Door with Full View Storm
- Cottage Rear Door
- Vinyl Siding with OSB Wrap and Vapor Barrier
- Architectural Shingles
- 5" Lineal Trim FDS
- 2x8 Floor Joist 16" on Center
- Smart Panel Insert with Columns & Eyebrow
- Exterior Outlet Front Door Side

## INSULATION

- R-21 Blown Fiberglass Roof (Formaldehyde Free)
- R-11 Fiberglass Insulation in Walls (Kraft Back)
- R-11 Fiberglass Insulation in Floors
- Thermal Zone 2

## INTERIOR

- Pex Plumbing with Legend Smart Click Fittings
- Programmable Thermostat
- 8 Foot Flat Ceilings
- Upgraded Lino Throughout
- Ceiling Fan in Living Room
- Wire and Brace for Ceiling Fan All Bedrooms
- Glass Light Fixtures in All Bedrooms
- LED Flush Mounted Ceiling Lights
- 2" Blinds Throughout
- Lever Handles on Interior Doors
- Entertainment Center
- Overhead Air
- Textured Ceilings

## KITCHEN

- 42" Overhead Cabinet System
- 3/4" Hardwood Cabinet Doors
- Lined Overhead Cabinets
- Lined Center Shelf in Base Cabinets
- Stainless Steel Farmhouse Sink
- Spring Loaded Faucet with Sprayer
- Color Matching Box Vent Hood
- Pendant Lights Over Island
- Tile Backsplash

## APPLIANCES

- Stainless Steel Side by Side Refrigerator
- Stainless Steel Smooth Top Range
- Stainless Steel Dishwasher
- 30 Gallon Dual Element High Efficiency Water Heater

## BATHS

- 96" Ceramic Tile Shower with Dual Shower Heads
- 54" Fiberglass Tub/Shower in Guest Bath
- China Sinks W/ Metal Faucets Both Baths
- Water Shut Offs at Toilets
- Elongated Toilets
- Master Bath Mirror Trim

## UTILITY

- Total Electric with 200 Amp Service
- Master Water Shut-Off Valve in Utility
- Utility Door
- Utility Shelf

## POPULAR OPTIONS



- Upgraded Insulation R-38-13-22
- Smart Panel with Trim Around All Windows
- Carbon Grey Trim Package
- Barnwood Doors
- Ceiling Beams
- Entertainment Center with Electric Fireplace and Wood Shiplap
- Bookcase By Entertainment Center
- 50 Gallon Water Heater
- AC Disconnect
- Gas Furnace/Gas Range
- 100 Amp Electrical Panel Box
- Wind Zone 2
- Microwave Over Range
- Ceiling Fan in Master Bedroom
- Upgraded Wainscot Exterior